

integrated

integrated brickworks sdn. bhd.

Keystone
COUNTRY
MANOR®

Old World Charm



Keystone Country Manor® offers the appearance and craftsmanship of rustic hand laid stone with the advantages of modern dry-stacked segmental wall construction and design, with easy installation of the pinned-connection and modular interlocking units.

The unique product features of Keystone Country Manor® allows for use as retaining walls, free-standing walls, planters, stairs, impressive entrance monuments, parapets and much more...



The multi-sized and multi-faceted concrete units are rugged, yet blended with colours and character, and appear as randomly-sized natural stone that has been weathered over time, enables a seamless blending with the surroundings, for patios, plazas, privacy walls, terraces, courtyards or water features.

In addition to providing strength and beauty, Keystone Country Manor® can help create signature hardscape designs, setting your project apart from all others.

The ability to create free-standing walls allows for the creation of barbeques and outdoor kitchens, bench seating and the concealment of outdoor lighting and speaker systems.

Use Keystone Country Manor® to provide detail and accent to a large lawn or green space, add grandeur to a driveway or footpath, or, create a truly unique pool/patio area.

" When it Comes to Free Standing Walls,
Keystone **Country Manor®** Stands Alone "

PRODUCT ATTRIBUTES

KEYSTONE COUNTRY MANOR® modular units are dry-cast from high-strength low absorption concrete by sophisticated and dedicated process equipment for durable long-lasting products and structures.

The dry-stacked and mechanically interconnected modular wall evokes the old world charm of a stonemason-crafted wall.



Keystone
COUNTRY
MANOR®

KEY FEATURES

Three or More Face Dimension

- Provides the greatest degree of random layout due to variations from unit side dimensions.
- Each unit has two different side dimensions.
- All units have two different side lengths to provide a random width appearance to the wall.

Colour

- Keystone Country Manor® is produced in colour blends that enhance the natural stone-like appearance.

Three Textured Sides on each unit

- Weathered or antiqued finish to provide a more "natural stone" look to the units.
- Allows each unit to be used in multiple positions within the wall.
- Each unit can be used as an exposed end unit or a 90° corner unit.
- Allows construction of small free-standing walls, parapet walls, pilasters and columns in addition to retaining walls.

Shape

- Each unit has a 90° angle and a tapered (angled) side, allowing the units to be used in 90° corners, tight fitting straight line walls, and radii at curves.

Units are Packaged in Sets

- Eliminates the need for the contractor to pull from multiple pallets to maintain random appearance.
- Provides for a simple method of construction and a random appearance to the wall system.

SUPPLIED IN SETS OF

- LARGE UNIT - 2 units
- MEDIUM UNIT - 1 unit
- SMALL UNIT - 1 unit
- FIBERGLASS PINS - 7 units

Universal Cap Units are available separately

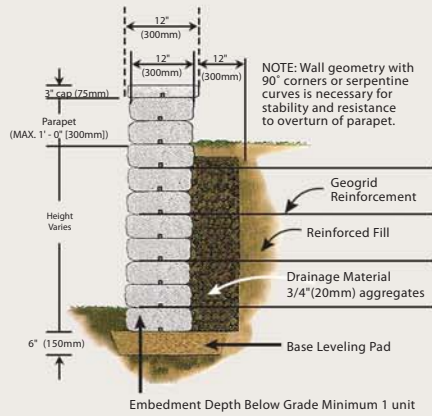
High Strength Pins with Shouldered Cap

- Multiple pin positions allow for near vertical, 9.5° batter (setback), and the opportunity to randomly pull a unit forward to accent the wall.

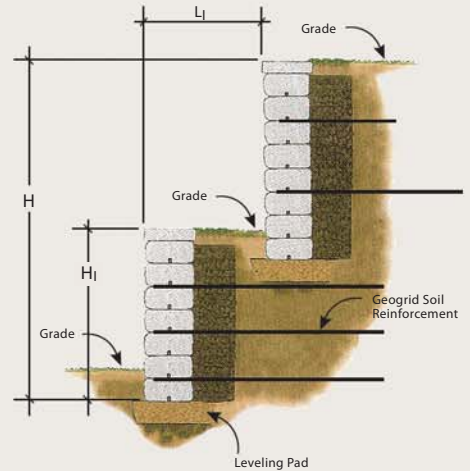
- Simplicity of construction
- Vertical, battered and parapet options
- Wall solutions from gravity walls to reinforced soils structures
- Positive Mechanical Connection with Keystone fiberglass connector pins

THE "TECHNICAL" SIDE

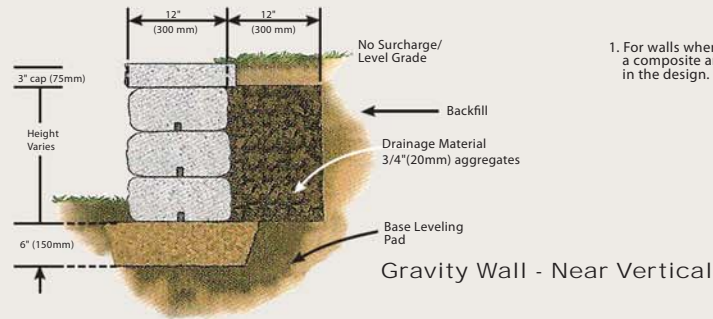
Reinforced Wall - Near Vertical Detail



Terrace Wall Proximity

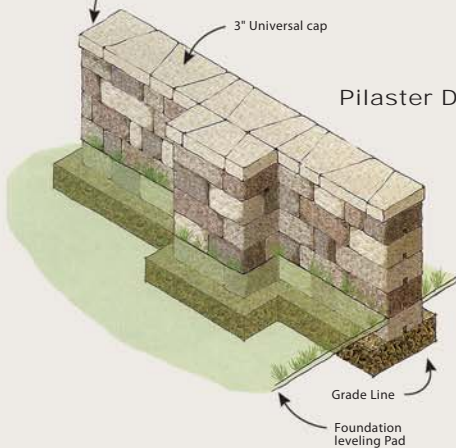


1. For walls where $L_1 < H_1 \times 2$, then the walls are to be considered as a composite and the entire wall height (H) needs to be considered in the design.



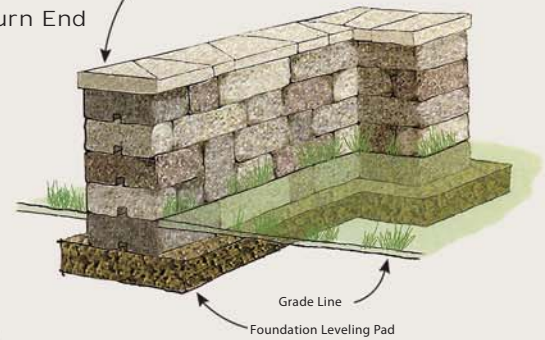
PRODUCT DETAIL

Cut Universal Cap as necessary to Create 90° End Cap Condition. Overhang unit by 1" to Match Overhang Along Unit Sides



Pilaster Detail

"L" Return End

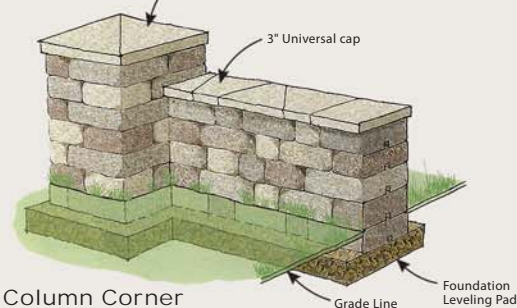


Internal Column reinforcing Should provide for Steel Re-Bar and Solid Concrete Grouting in Connection With A Reinforced Concrete Foundation.

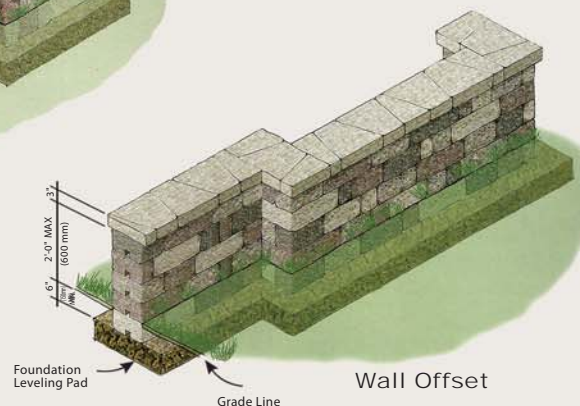


Wall End Column

Consult Your Keystone Representative for Options and Availability of Pre-Cast Copings.



Column Corner



Wall Offset

PRODUCT GALLERY



"Designed to look **Rustic,**
Engineered to last"

Retaining Excellence™

Large Unit

Unit Weight	±60 lbs. (27 kg)
Size (HxWxD)	6"h x 10"d x 16"/14"w (150mm x 250mm x 400mm/350mm)



Medium Unit

Unit Weight	±40 lbs. (18 kg)
Size (HxWxD)	6"h x 10"d x 12"/10"w (150mm x 250mm x 300mm/250mm)



Small Unit

Unit Weight	±25 lbs. (11 kg)
Size (HxWxD)	6"h x 10"d x 6"/4"w (150mm x 250mm x 150mm/100mm)



Universal Cap Unit

Unit Weight	±30 lbs. (14 kg)
Size (HxWxD)	3"h x 12"d x 14"/8"w (75mm x 300mm x 350mm/200mm)



Fiberglass Pins

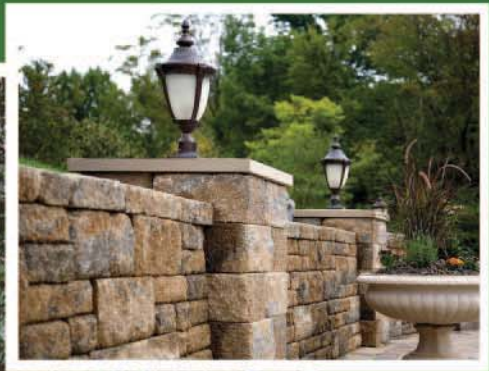
Size (HxWxD)	5 ¼" (130mm) long 1 ¼" (32mm) shoulder length
--------------	--



Manufacturing reference standards : MS 27 : 1996, BS 6073 : 1981, ASTM C 1372-97, ASTM C 90-75, ASTM C 140-75

Additional information, products and services available on request

- | | |
|---|----------------------------------|
| a. Design and Construction Manual | e. Geogrid Specifications |
| b. KeyWall Engineering Design Software | f. S R W Specifications |
| c. KeyWall Software Design Manual and Operating Guide | g. Method Statement |
| d. KEYSTONE COUNTRY MANOR [®] Specifications | h. Preliminary Design Assistance |



integrated brickworks sdn bhd

(012282-X)

No 27, Jalan Tago 5, Tago Industrial Park
Kepong, Bdr Sri Damansara, 52200 Kuala Lumpur, Malaysia

Tel: 603 - 6272 4631 Fax: 603 - 6272 4681

www.integratedbrickworks.com

Licensee for Malaysia, Singapore and Brunei Darussalam